



HOT COPY PASTE

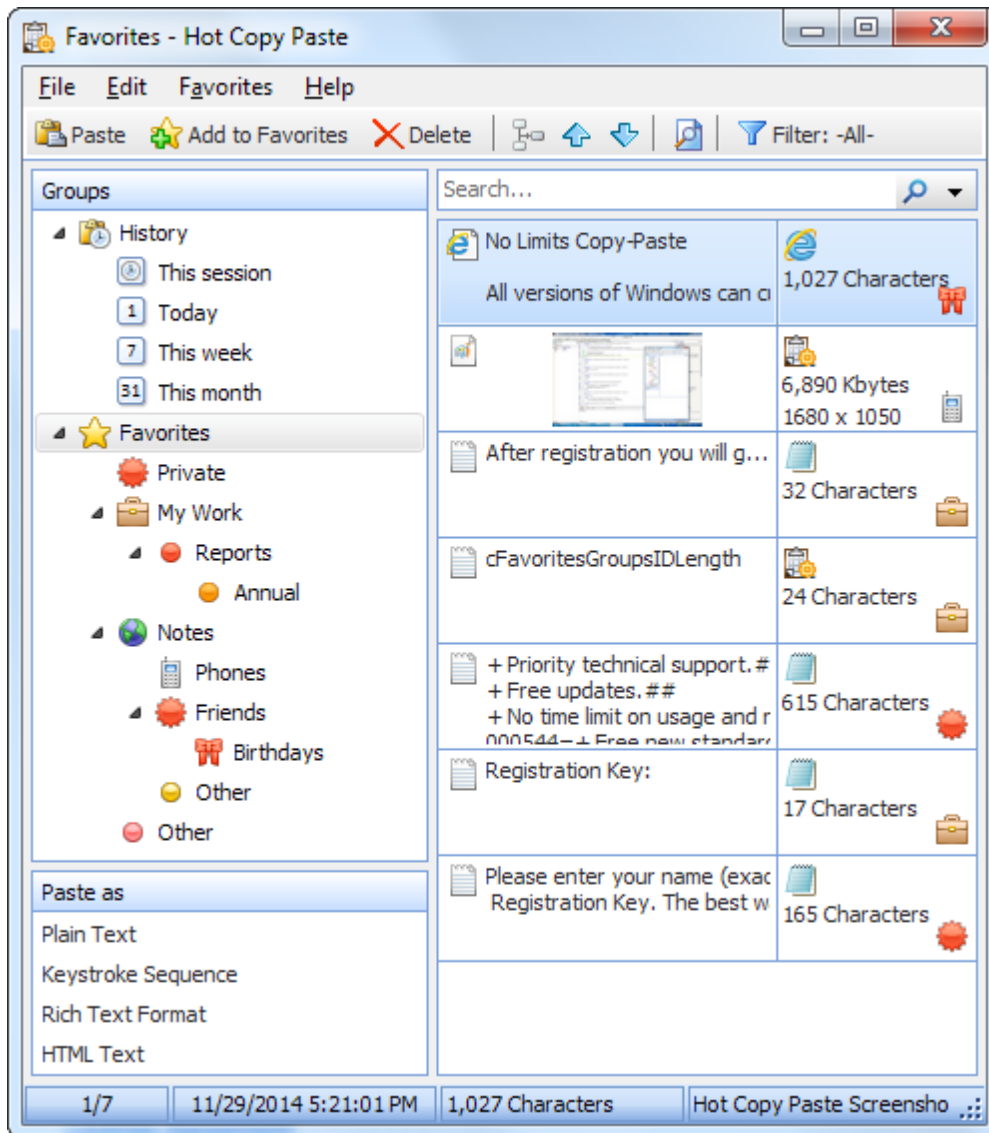
Enhances Windows Clipboard

Copyright (c) by Comfort Software Group

Table of Contents

Part I Introducing Hot Copy Paste	1
1 How to buy Hot Copy Paste	2
2 Working with clipboard manager	2
Part II Options	4
1 Main Properties	5
2 Clipboard Manager	5
3 Keyboard Shortcuts	6
4 Exceptions	7
5 Sounds	7
6 Security	7
7 Advanced	7
Part III Other issues	8
1 FAQ - Frequently asked questions	8
2 Command line parameters	9
3 License Agreement	10
4 Contact information	11
Index	12

1 Introducing Hot Copy Paste



Enhance Windows Clipboard with multiple snippets, secure storage and full-text search. Hot Copy Paste works in every program supporting Windows Clipboard, and works in many that don't. Cut, copy and paste as many snippets as you need at once! Hot Copy Paste will store information you copy to the clipboard so that it won't be lost even after you reboot your PC.

Hot Copy Paste is the better Clipboard. Removing built-in limitations of Windows Clipboard, the new clipboard utility allows you to copy, cut and paste many pieces of information at once. Recording every snippet such as sections of text or Web pages, pictures, tables and other objects, Hot Copy Paste will store them securely for future use. Hot Copy Paste stores information you copy and paste, so it won't be lost even after you reboot your PC!

Concerned about security? Hot Copy Paste will encrypt information you cut and copy with an industry-standard Blowfish algorithm and a strong encryption key, making your snippets visible to your eyes only. You can even assign the names for the snippets hiding their content and specify programs from which Hot Copy Paste will never keep any snippets.

The clipboard manager supports all applications supporting with Windows Clipboard, and enables many programs that don't by pasting the text as series of keystrokes. You can set Hot Copy Paste to paste

text as HTML code or remove all formatting by pasting plain text. Of course, Hot Copy Paste supports every format recognized by Windows Clipboard, allowing you to copy, cut and paste text, graphics, tables, audio clips, and other embeddable object.

Hot Copy Paste makes it easy to navigate through thousands of snippets. Supporting grouping and filtering, and performing full-text search for the snippet in need, the clipboard utility makes managing data you copy, cut and paste easy. And just in case you paste some snippets more often than others, there are Favorites for the snippets. You can assign hot keys to paste your favorite snippets in a moment!

1.1 How to buy Hot Copy Paste

Hot Copy Paste is distributed as Shareware. If you like Hot Copy Paste and decide to keep it, you will need to purchase a registration key. The trial version becomes registered when you enter the Registration Key on your computer.

You can purchase the Registration Key on-line either by credit card, PayPal, bank transfer or check.

For more information, please visit <http://windowsclipboard.com/buy/>



Place a risk-free order

30 days unconditional refund if you are not happy with our product.

Receive priority technical support

Since we depend on our users buying our software and do not use (or abuse) other monetization methods, our users is what matters most to us. Should you indicate your registration code when contacting our support staff, they would prioritize your request over those of the trial/non-paying users.

Get the future upgrades (single-user and multi-user licenses)

Wherever Hot Copy Paste gets upgraded, you will be able to use the latest version of it free of charge.

Support Hot Copy Paste development

By buying Hot Copy Paste today, you will support Hot Copy Paste developers and encourage them to ship the better versions in the future.

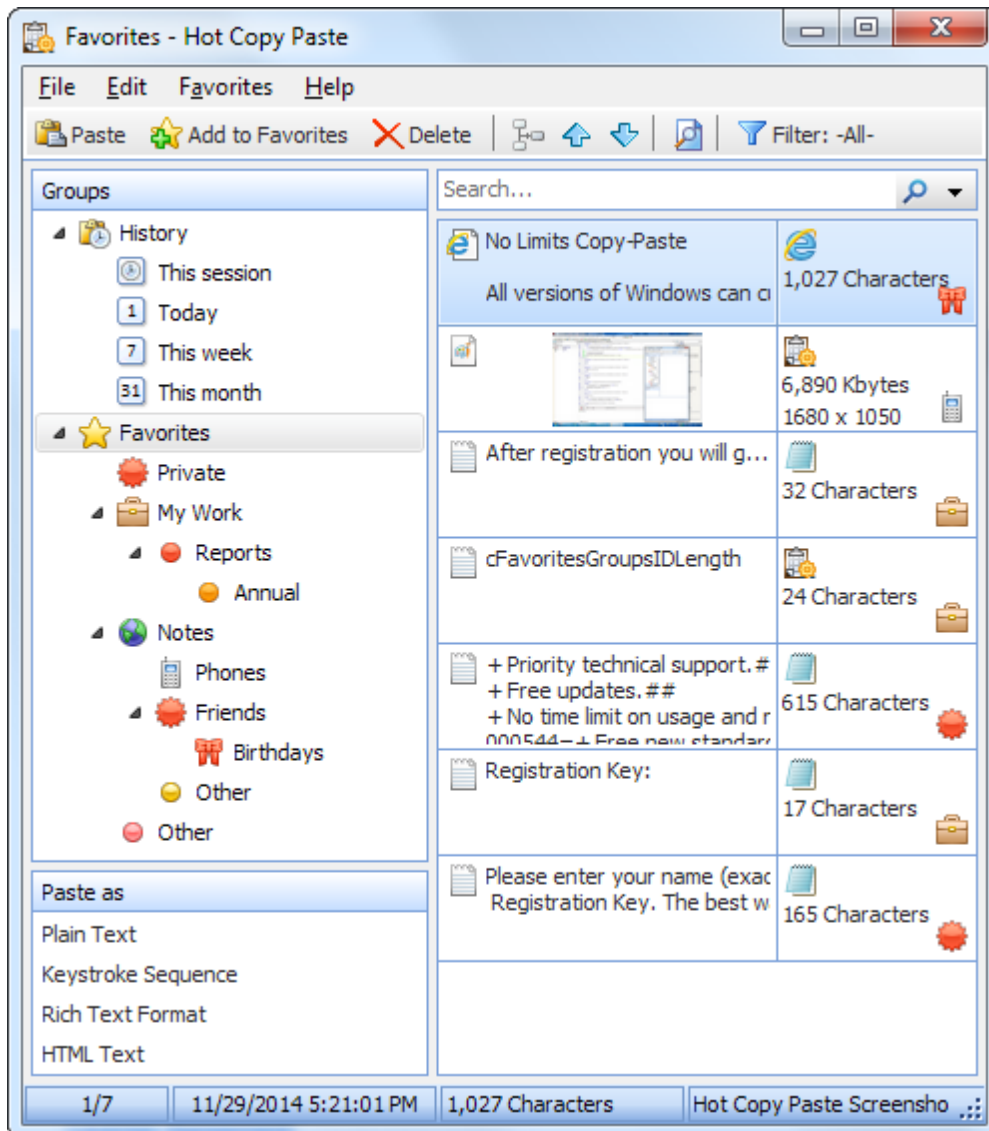
For detailed information on how to purchase and register Hot Copy Paste, please read the following topics carefully:

[License Agreement](#)

[Order online](#)

1.2 Working with clipboard manager

Clipboard manager automatically monitors the clipboard for any changes and saves them in the clipboard history.



All data are automatically saved to the hard drive. You can specify the number of fragments to be saved to keep the impact on your computer's performance to a minimum. By default, 500 fragments are saved.

Clipboard manager supports **all** known data **formats**.

By default, the **Win+Ins** keyboard shortcut opens the clipboard manager window.

The following information is displayed for each saved fragment:

- Brief fragment contents: a text or an image.
- The icon of the fragment's format as defined in your system.
- The icon of the application from which the fragment was copied to the clipboard.
- Additional brief information for each fragment according to its format.
- The list of all formats the fragment can be used in.

You can select several fragments in the clipboard manager by pressing and holding **Ctrl** or **Shift** key. To paste the selected fragments into the current application, press **Enter** or **Ins** key.

All data are copied to the clipboard in several formats at once, so you can select the format that you want to use. To paste the currently selected fragment in a certain format, select that format in the **Paste as** list. For instance, you can paste *RTF* text in the *Plain Text* format.

See the [Clipboard Manager](#) section for the clipboard manager settings.

Keyboard shortcuts

- **Ctrl+F** – Activate the Instant Search box. In the Instant Search box, type your search text. When you start typing, the search begins automatically. When you are finished with the search, you can clear the search by pressing **Esc** key. Your 20 most recent searches are saved and can be reused. Click **Search** button in the Instant Search box, or press **Down** key, and then click the search word or phrase that you want to use again. **Ins** or **Enter** – Paste the selected fragments
- **Ctrl+D** – Add the selected fragments to Favorites
- **Del** – Delete the selected fragments
- **Ctrl+Up Arrow** – Move the selected fragments up
- **Ctrl+Down Arrow** – Move the selected fragments down
- **Ctrl+H** – Open History
- **Ctrl+I** – Open Favorites
- **Ctrl+C** – Copy the selected fragments to the clipboard
- **Ctrl+A** – Select all fragments in the current list

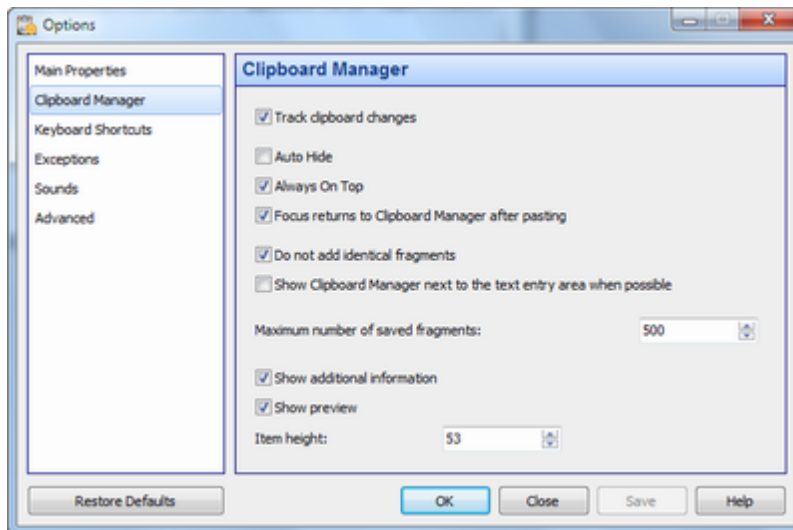
Tips and tricks

- You can select several fragments in the clipboard manager by pressing and holding **Ctrl** or **Shift** key.
- You can merge selected text fragments into one.
- You can drag and drop selected fragments from the clipboard manager into another application.
- You can drag and drop selected fragments into groups of **favorite** fragments.
- You can **protect** your data with strong 448-bit Blowfish **encryption**, so that nobody can access them without knowing your [password](#).
- You can specify a color (category) for any saved fragment in clipboard manager.

2 Options

When developing Hot Copy Paste, we tried to keep the number of additional options to a minimum and left only those that are truly necessary.

To open the Options dialog box, right-click the Hot Copy Paste icon in the system tray and select the **Options** item in the context menu.



2.1 Main Properties

The main properties define the interaction between Hot Copy Paste and Windows.

Language

The language of the Hot Copy Paste user interface.

Run Hot Copy Paste at Windows startup

If you check this checkbox, Hot Copy Paste will be automatically launched when the system is started.

Set high priority for Hot Copy Paste

Check this checkbox if any features of Hot Copy Paste are unstable on your system.

Hide the Hot Copy Paste icon in the system tray

If this checkbox is checked, the application's icon will not be shown in the system tray.

Show the Hot Copy Paste toolbar in the taskbar

Checking this checkbox will add the application's toolbar with one button onto the taskbar. You can use this button to launch the clipboard manager.

2.2 Clipboard Manager

Track clipboard changes

If you clear this checkbox, clipboard manager will not monitor the clipboard.

Auto hide

The clipboard manager window can be automatically closed after a fragment is pasted.

Always on top

The clipboard manager window can be placed above all non-topmost windows and stay on top even when deactivated.

Return focus back to the clipboard manager after pasting

If this checkbox is checked, the focus will return to Hot Copy Paste after a fragment is pasted. Otherwise, the focus will stay in the target application.

Show the clipboard manager next to the text entry area when possible

The clipboard manager window can be automatically placed next to the text cursor.

Do not add identical fragments

If this checkbox is checked, once a fragment is copied to the clipboard, all its earlier saved copies will be deleted.

Note: Using this option on a slow computer may cause a slowdown when copying large fragments to the clipboard.

Oldest fragments on top (otherwise newest on top)

You can sort fragments by date and time either from oldest to newest, or from newest to oldest.

Maximum number of saved fragments

The number of fragments starting from which the earliest fragment will be deleted.

Show preview

You can display a panel with full information about the selected fragment.

Single line

This option lets you display rows in the list of fragments in a special way: Each row will become smaller in height and will contain only one line.

Show additional information

You can display more information about each fragment: character count, image size, application icon, etc.

Item height

The height of elements in the list of saved fragments, in pixels (minimum 25 pixels).

2.3 Keyboard Shortcuts

Keyboard shortcuts work in all applications.

Shortcut list

Show clipboard manager

Opens the clipboard manager.

For more details, see the [Working with Clipboard Manager](#) section.

Paste clipboard as plain text

Pastes unformatted text from the clipboard.

It may be handy to have the pasted text formatted like the other text at the target location, instead of keeping the original formatting.

Paste clipboard as keystroke sequence

Pastes text from the clipboard as a key sequence. Please note that the text cannot be very long.

Track clipboard changes on/off

Enables/disables clipboard monitoring by the clipboard manager. For example, you can disable the monitoring while copying confidential data.

Show options

Opens the application's Options window.

Please note that when you are specifying keyboard shortcuts, the left and right control keys (Shift, Ctrl, Alt, or Win) are processed differently. To use only the right Shift, Ctrl, Alt, or Win key in a keyboard shortcut, press the respective right key. To use both (right and left) keys, press the respective left key.

2.4 Exceptions

You can specify applications where you want Hot Copy Paste disabled.

How it works

Whenever any of the specified programs becomes active, Hot Copy Paste turns off, indicating it in the tray icon. Hot Copy Paste resumes operation once you switch to another program.

2.5 Sounds

You can configure short sounds for different events, such as pressing a key on the on-screen keyboard. By default, sounds are turned on. You can turn them off via the application's context menu.

You can adjust the volume for the sounds. The application will apply that volume to all its sounds.

To select your own sound, click the **Browse...** button. You can use only **Wave** files.

2.6 Security

These options provide advanced security functionality for the users of the application.

Encrypt data

If you check this checkbox, all new pieces of data will be encrypted from now on. ***Please note that using encryption may slow down the application's performance when the clipboard contains large fragments.***

Set password for encryption and decryption

You can protect your data with strong 448-bit Blowfish encryption, so that nobody can access them without knowing your password. Please note that if you change the password, you will be unable to use the encrypted data. If you forget the password, you may lose access to all encrypted data forever.

Delete fragments from history before shutdown

This option lets you automatically delete some or all fragments before the computer **shuts down** or enters the **sleep mode**. "Fragments resembling passwords" are the lines that contain a single word without spaces.

2.7 Advanced

Data directory

The folder for storing the clipboard manager data.

Action for a click on the system tray icon

You can specify an action to be executed when you click the application's icon in the system tray.

Save to File...

Click this button to save all settings to the INI file.

Load from File...

Click this button to load all settings from the INI file. You can also load settings from the INI file by using the [/RESTORE command line parameter](#).

3 Other issues

[FAQ – Frequently asked questions](#)

Please read this topic if you have a problem with registering or using Hot Copy Paste.

[License Agreement](#)

Hot Copy Paste End User License Agreement.

[Contact information](#)

Comfort Software Group contact details.

3.1 FAQ - Frequently asked questions

Registration issues**Q: How to check if your software product is registered?**

A: To see the application's registration status, select **About Hot Copy Paste** in its context menu.

Q: I've lost my Hot Copy Paste registration key. Now the application tells me that it has expired. How can I get my registration key back?

A: Please send an email message to lost-code@comfort-software.com from the email address used for purchasing the Hot Copy Paste license. Please use the following format in the message body:

From: (Your name here)
Email: (Your email address here)
Software: Hot Copy Paste
Request: Please resend me the Product Key

Hot Copy Paste usage issues**Q: Your application doesn't react to any key combinations at all.**

A: Maybe that's because another hotkey manager is running? Otherwise, please make sure that Hot Copy Paste is turned on.

Q: How can I transfer the application's settings and data to another computer?

A: Sorry, you cannot do it in one click. You will have to do the following:

1. Save the general settings: **Parameters** → **Advanced** → **Save to File...**
2. Save the folder with clipboard data (you can find the path to this folder in the [Advanced](#) section)

- of the **Options** window).
3. Restore all these data on the target computer.

Q: The application doesn't start and shows an error message each time I try to run it!

A: Please check this:

1. Our application works on Windows 2000 or above only. Sorry, but Windows 95, Windows 98, and Windows CE are not supported.
2. Maybe some of the application's components have not been installed. Please try reinstalling the application.
3. Make sure to install the application to the **Program Files** folder. It's a security-related requirement for new operating systems.

Q: Can I use the Sleep key in a shortcut?

A: No, you cannot. The **Wake**, **Sleep**, and **Power** keys cannot be used as a hotkey or part of a key combination for any action.

3.2 Command line parameters

Hot Copy Paste (hcp.exe) accepts optional command line parameters. These parameters can be useful for developers and for calling our application from other software.

/HELP and /?

Displays the list of valid command line parameters in a message box.

/LOADCLIP

Loads the file specified in the command line to the clipboard. You can load graphics or text files (bmp, jpg, jpeg, png, gif, emf, wmf, ico, pcx, ani, cur, txt).

For example: `C:\Program Files\HotCopyPaste\hcp.exe /LOADCLIP "C:\My Documents\myphoto.jpg"`

/CLOSE

Closes a previously launched instance of the application.

/COMMON

Starts the application with the same settings for all users.

This parameter instructs the application to save its settings to the following registry key:

HKEY_LOCAL_MACHINE\SOFTWARE\ComfortSoftware\hcp

Normally, they are saved to this registry key: HKEY_CURRENT_USER\SOFTWARE\ComfortSoftware\hcp

/INIFILE

Instructs the application to save its settings to the INI file. The settings will be saved to the *Backup.ini* file located in the application installation folder (in the *Data* subfolder).

/OPTIONS

Opens the application settings window.

/RESTORE

Instructs the application to load settings from the INI file specified in the command line. If another instance of the application is already running, the settings from the INI file will be loaded into it. You can save the settings to the INI file by opening the **Options** window and switching to the **Advanced**

section.

For example: `C:\Program Files\HotCopyPaste\hcp.exe /RESTORE "C:\Program Files\HotCopyPaste\params.ini"`

/TURNON and /TURNOFF

Completely turn the application on or off.

/SAFEMODE

Launches the application in safe mode. Some features of the application will be disabled.

/DEBUG

Instructs the application to create the *Log.txt* file in the application folder (in the *Data* subfolder). The log file will contain details about the application's activity, which can be a helpful debugging aid. The information contained in the log file is technical in nature and therefore not intended to be understandable by end users.

If a file with the specified name already exists in the application folder, it will be overwritten.

3.3 License Agreement

Hot Copy Paste EULA (End User License Agreement) for use and distribution

YOU AGREE TO BE BOUND BY THE TERMS OF THIS EULA BY INSTALLING THIS PRODUCT. IF YOU DO NOT AGREE, DO NOT INSTALL THIS PRODUCT.

[Hot Copy Paste](#) is distributed as try-before-you-buy product. This means:

1. All copyrights to [Hot Copy Paste](#) are exclusively owned by Comfort Software Group.
2. Anyone may use this software during a test period of 30 days. Following this test period of 30 days or less, if you wish to continue to use [Hot Copy Paste](#), you must purchase a license.
3. There are 2 basic types of licenses issued for [Hot Copy Paste](#), these are:
 - a. A single computer USAGE license. The user purchases ONE license to USE the [Hot Copy Paste](#) on ONE computer.

Home users may use their single computer usage license on all computers which are in property of the license owner.

Business users require one license per computer [Hot Copy Paste](#) is installed on.

- b. A multiple usage license. The user purchases a number of usage licenses for use, by the purchaser or the purchaser's employees on the same number of computers.

In a network (server/client) environment you must purchase a license copy for each separate client (workstation) on which [Hot Copy Paste](#) is installed, used, or accessed. A separate license copy for each client (workstation) is needed regardless of whether the clients (workstations) will use [Hot Copy Paste](#) simultaneously or at different times. If for example you wish to have 9 different clients (workstations) in your network with access to [Hot Copy Paste](#), you must purchase 9 license copies.

A user who purchased a [Hot Copy Paste](#) license, is granted a non-exclusive right to use [Hot Copy Paste](#) on as many computers as defined by the licensing terms above according to the number of licenses purchased, for any legal purpose. The licensed [Hot Copy Paste](#) software may not be rented or leased, but may be permanently transferred, in it's entirety, if the person receiving it agrees to the terms of this license. If the software is an update, the transfer must include the

update and all previous versions.

4. The [Hot Copy Paste](#) unlicensed trial version may be freely distributed, with exceptions noted below, provided the distribution package is not modified in any way.
 - a. No person or company may distribute separate parts of the package without written permission of the copyright owner.
 - b. The [Hot Copy Paste](#) unlicensed trial version may not be distributed inside of any other software package without written permission of the copyright owner.
 - c. Hacks/cracks, keys or key generators may not be included on the same distribution.
5. [Hot Copy Paste](#) is distributed "as is". No warranty of any kind is expressed or implied. You use at your own risk. Neither the author nor the agents of the author will be liable for data loss, damages, loss of profits or any other kind of loss while using or misusing this software.
6. You may not use, copy, emulate, clone, rent, lease, sell, modify, decompile, disassemble, otherwise reverse engineer, or transfer the licensed program, or any subset of the licensed program, except as provided for in this agreement. Any such unauthorized use shall result in immediate and automatic termination of this license and may result in criminal and/or civil prosecution.

All rights not expressly granted here are reserved by Comfort Software Group.

7. Installing and using [Hot Copy Paste](#) signifies acceptance of these terms and conditions of the license.
8. If you do not agree with the terms of this license you must remove [Hot Copy Paste](#) files from your storage devices and cease to use the product.

3.4 Contact information

User Support: support@windowsclipboard.com

PR and Press contact: press@comfort-software.com

Index

- C -

Command line parameters 9
Contact information 11

- F -

FAQ - Frequently asked questions 8

- H -

How to buy Hot Copy Paste 2

- I -

Introducing Hot Copy Paste 1

- L -

License Agreement 10

- O -

Options

- Advanced 7
- Clipboard Manager 5
- Exceptions 7
- Keyboard Shortcuts 6
- Main Properties 5
- Security 7
- Sounds 7

- S -

Support 11

- W -

Working with clipboard manager 2